

DIESEL ENGINES

EN

Engines

Lightweight, air-cooled, four-stroke Antor engines with high efficiency are used wherever power is required with various models between 7 and 17 HP. Used in agriculture, especially for hoeing machines and irrigation, in many fields of industry and in construction machinery and generators, the performance and robustness of Antor engines allows provision of power requirements at various fields without any problem.

ES

Los Motores

Los motores Antor de alta eficiencia, ligeros, refrigerados por aire y de cuatro tiempos con distintos modelos entre 7 y 17 caballos se usan en todos los lugares donde se necesita potencia. Con el rendimiento y la estabilidad de los motores Antor que se utilizan en agricultura, especialmente en anclajes y riego, en muchas áreas de la industria, en máquinas de construcción y generadores, se cumplen los requisitos de potencia en diferentes áreas sin ningún problema.

FR

Moteurs

Les moteurs Antor à haut rendement, léger, à refroidissement par air et quatre temps sont utilisés partout où la puissance est requise avec des différents modèles entre 7 à 17 chevaux. Les besoins en énergie dans différents domaines sont satisfaits sans aucun problème avec la performance et la stabilité des moteurs Antor utilisés dans l'agriculture, en particulier dans les bineuses et l'irrigation, dans de nombreux domaines de l'industrie, dans les engins de chantier et les générateurs.



DIESEL ENGINES



**ANTOR DIESEL
AD 320**

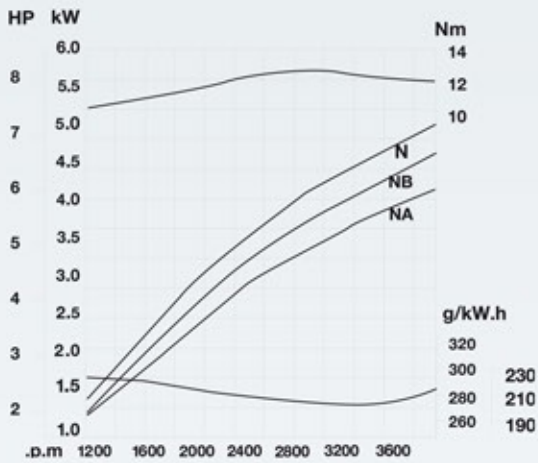


**ANTOR DIESEL
AD 510 BS**

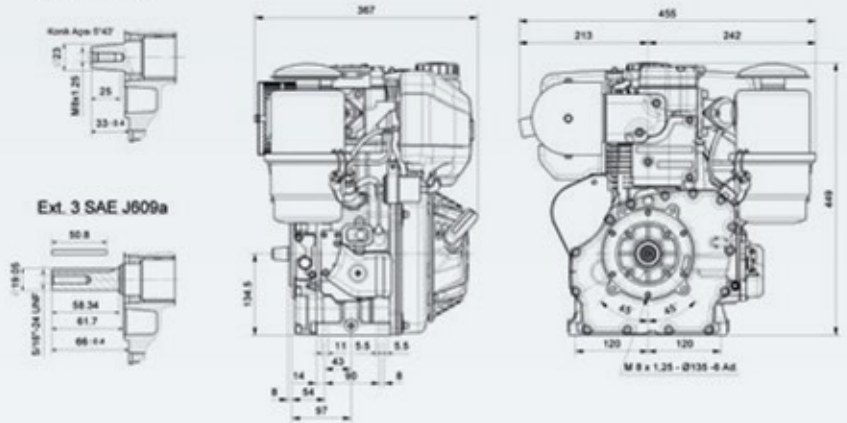


MODEL		AD 320	AD 510 BS
Cylinders	(Number)	1	1
Displacement	(cm ³)	315	510
Bore	(mm)	78	85
Stroke	(mm)	66	90
Compression Ratio		17.5:1	17.5:1
Rotation	(rpm)	3,600	3,000
Rating N (DIN 70020)	(HP)	6.5	12
Max. Torque	(kgm)	13.8@2,800 (N power)	32.8@1,800
Fuel Tank Capacity	(l)	5	5.3
Specific Fuel Consumption	(gr/HPh)	220	190
Oil Consumption	(gr/h)	5	8
Oil Sump Capacity	(l)	0.30	1.75
Dry Weight	(kg)	33	65

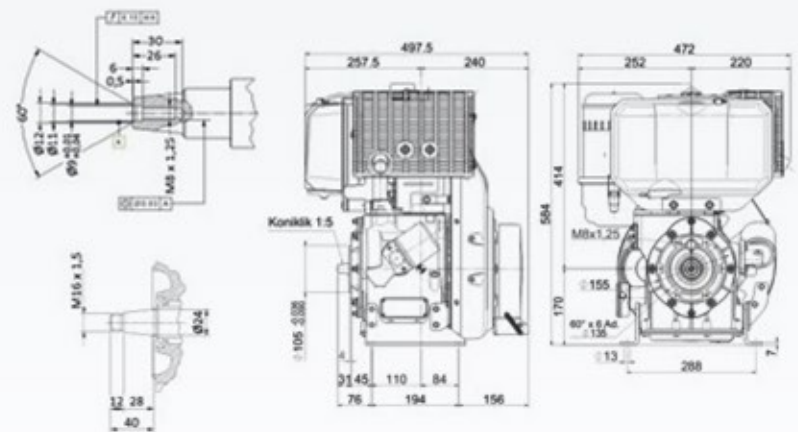
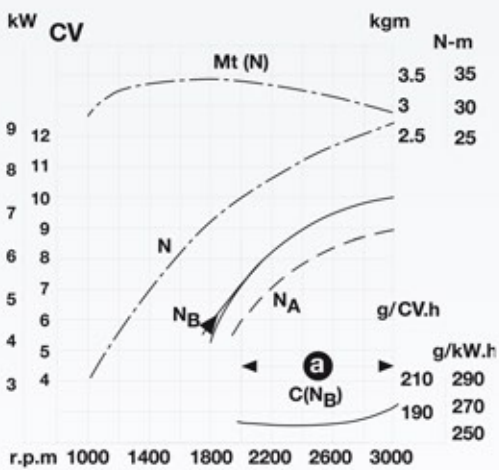
ANTOR DIESEL AD 320



STANDARD



ANTOR DIESEL AD 510 BS



DIESEL ENGINES



■ ANTOR DIESEL 6 LD 400

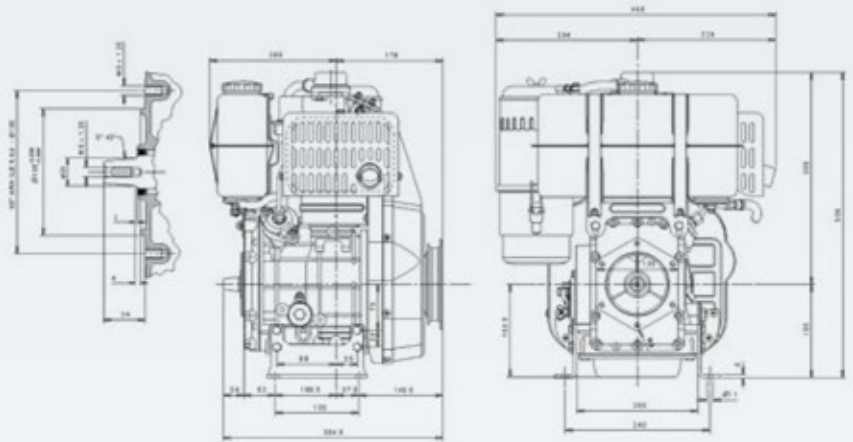
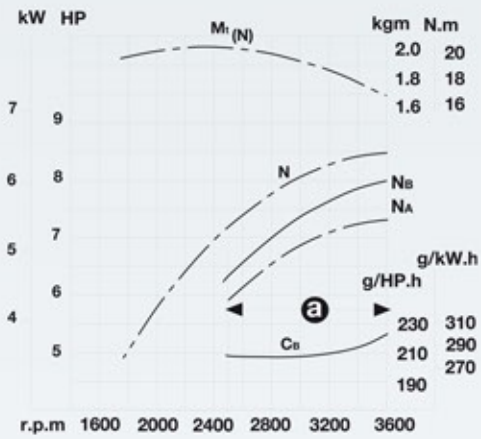


■ ANTOR DIESEL 3 LD 510

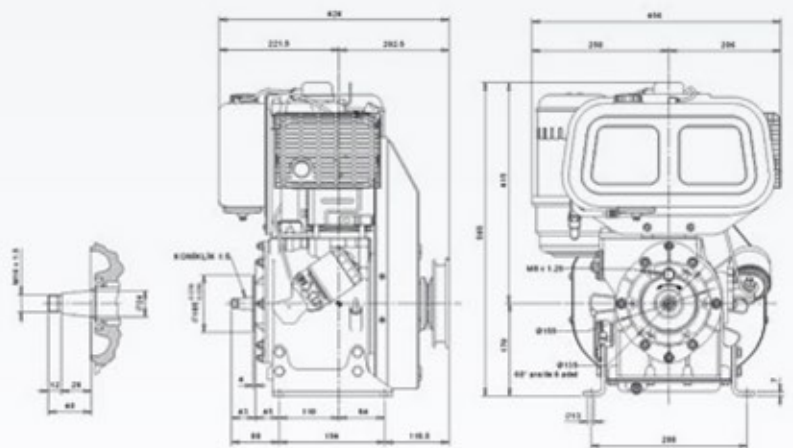
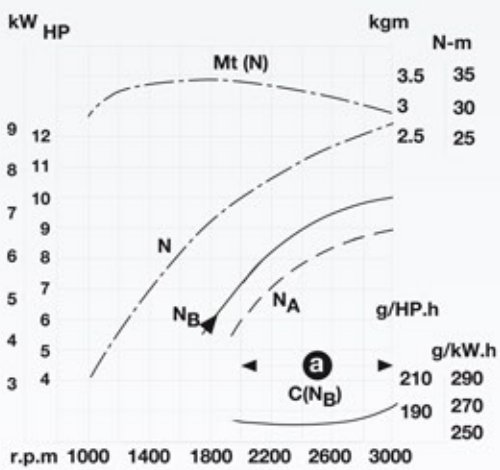


MODEL		6 LD 400	3 LD 510
Cylinders	(Number)	1	1
Displacement	(cm ³)	395	510
Bore	(mm)	86	85
Stroke	(mm)	68	90
Compression Ratio		18:1	17.5:1
Rotation	(rpm)	3,600	3,000
Rating N (DIN 70020)	(HP)	8.5	12
Max. Torque	(kgm)	2@2,200 rpm	3.35@1,800 rpm
Fuel Tank Capacity	(l)	4.5	5.5
Specific Fuel Consumption	(gr/HPh)	220	190
Oil Consumption	(gr/h)	11.5	10
Oil Sump Capacity	(l)	1.2	1.75
Dry Weight	(kg)	45	60

ANTOR DIESEL 6 LD 400



ANTOR DIESEL 3 LD 510



DIESEL ENGINES



■ ANTOR DIESEL 4 LD 640

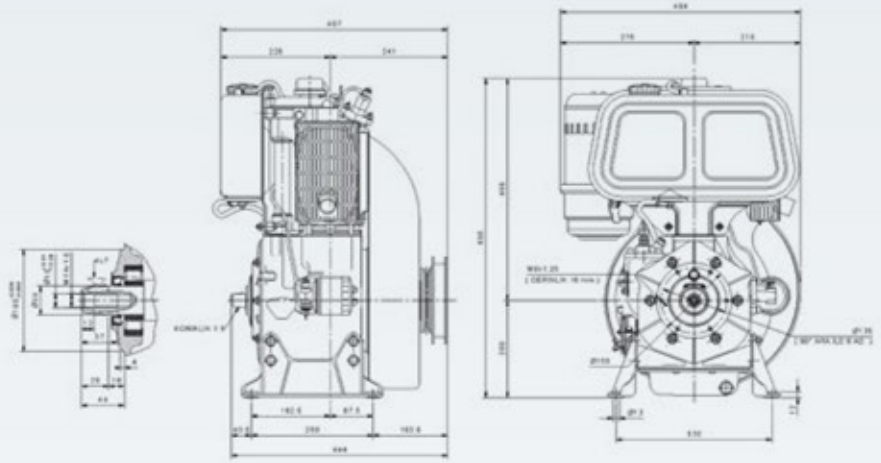
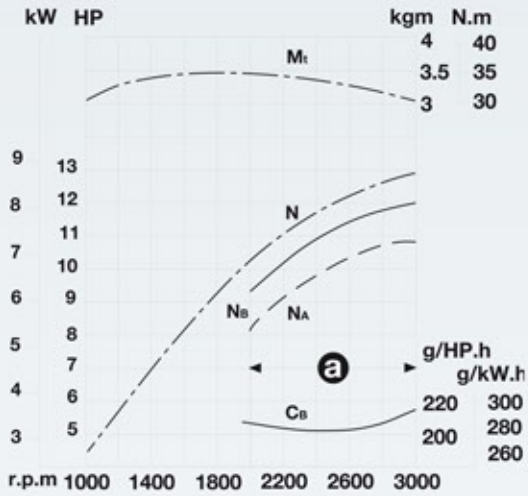


■ ANTOR DIESEL 4 LD 820



MODEL		4 LD 640	4 LD 820
Cylinders	(Number)	1	1
Displacement	(cm ³)	638	817
Bore	(mm)	95	102
Stroke	(mm)	90	100
Compression Ratio		17:1	17:1
Rotation	(rpm)	3,000	2,600 (3,000)
Rating N (DIN 70020)	(HP)	13	15 / (17)
Max. Torque	(kgm)	3.5@1,800 rpm	5@1,600 rpm
Fuel Tank Capacity	(l)	7.5	7.2
Specific Fuel Consumption	(gr/HPh)	190	190
Oil Consumption	(gr/h)	24	30
Oil Sump Capacity	(l)	2.6	2.6
Dry Weight	(kg)	98	100

ANTOR DIESEL 4 LD 640



ANTOR DIESEL 4 LD 820

